

Gold Properties

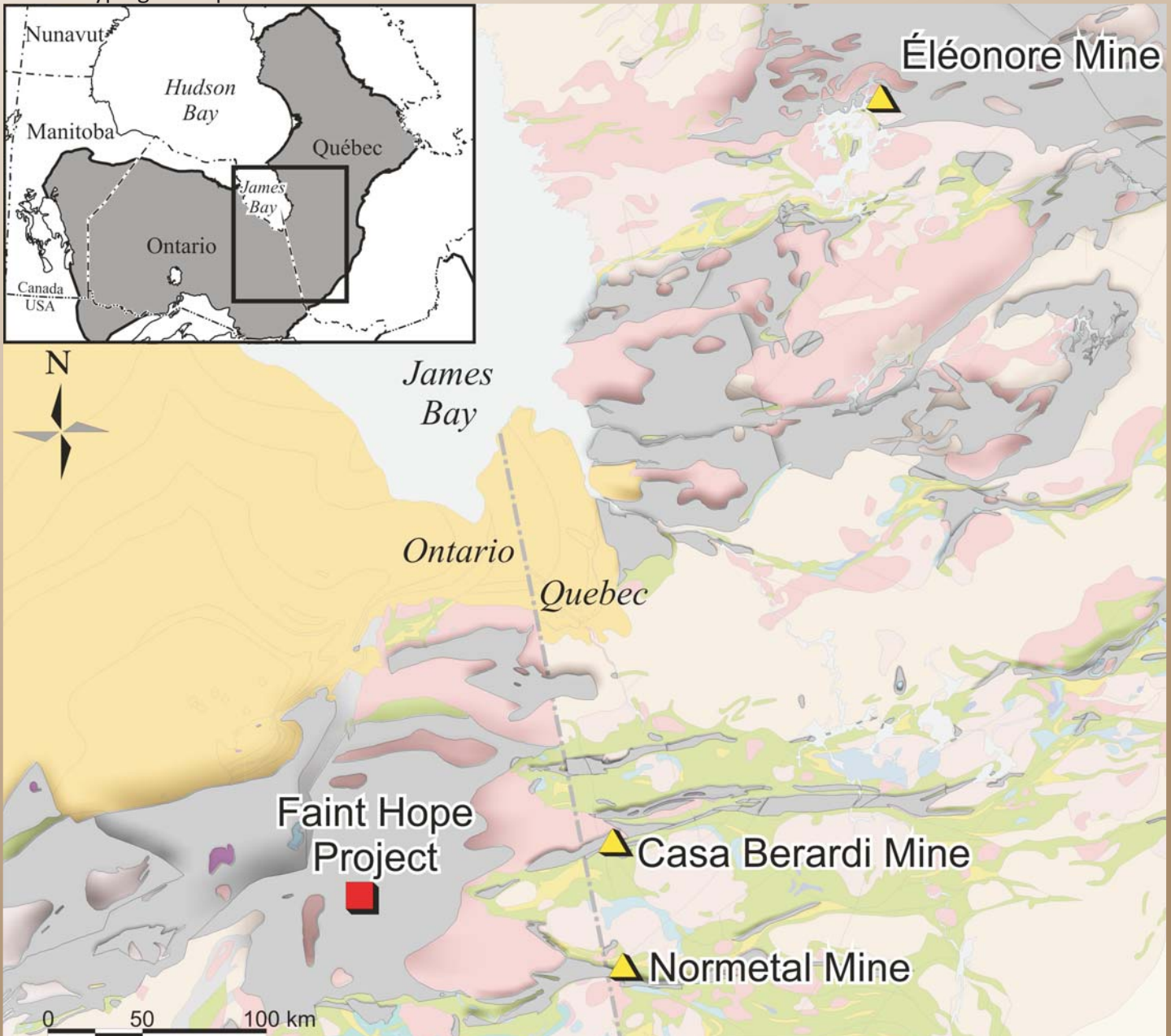


NORTHERN SHIELD RESOURCES INC

TSX VENTURE: NRN

FAINT HOPE

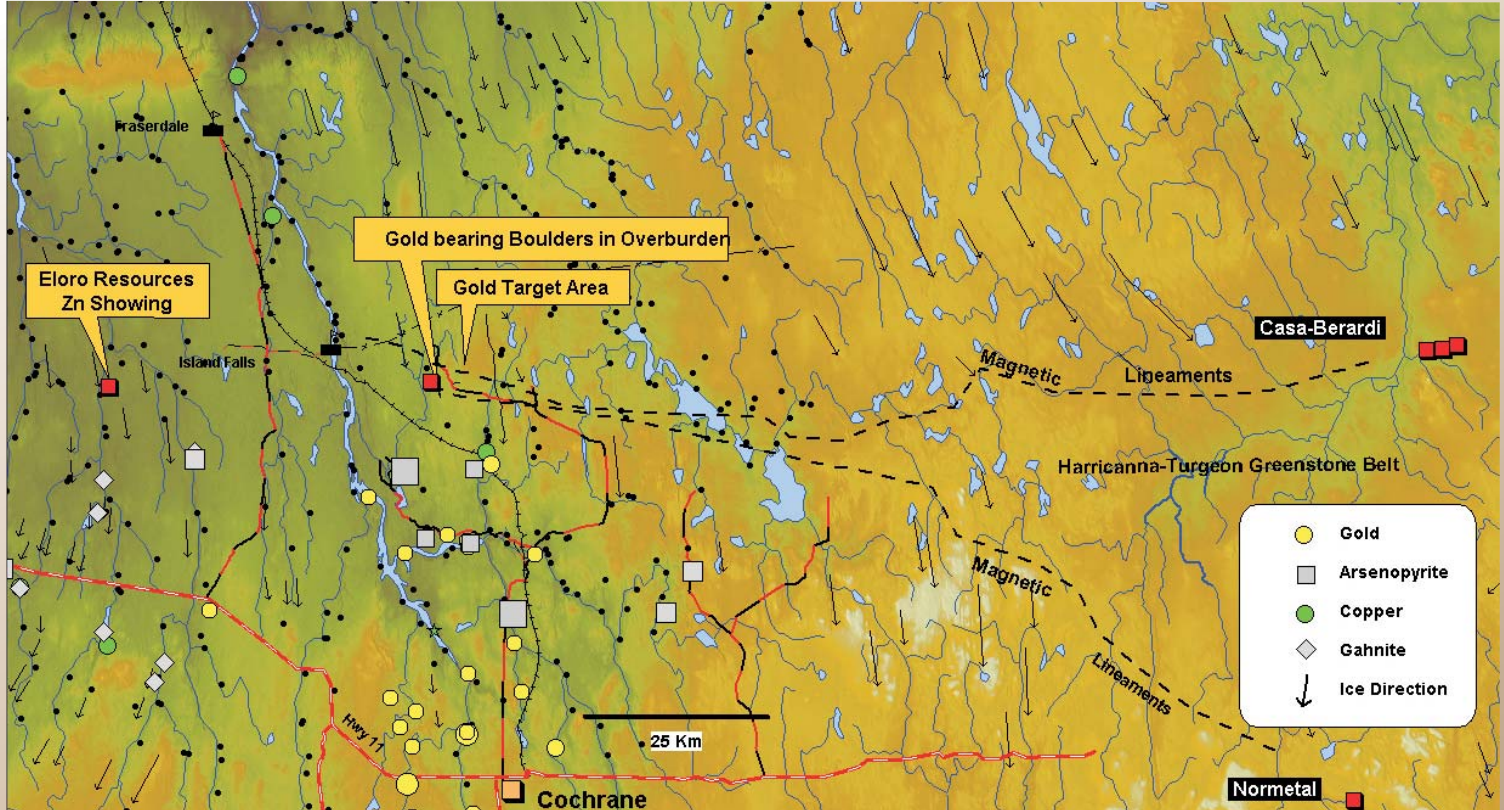
In 2005, Northern Shield discovered gold anomalous, sulphide-bearing boulders while drill testing a kimberlite target on its Faint Hope Property, north of Cochrane, Ontario. The property is located in the middle of the Quetico metasedimentary belt and has a similar geochemical signature as the Éléonore gold deposit (Gold Corp.) and other Homestake-type gold deposits.





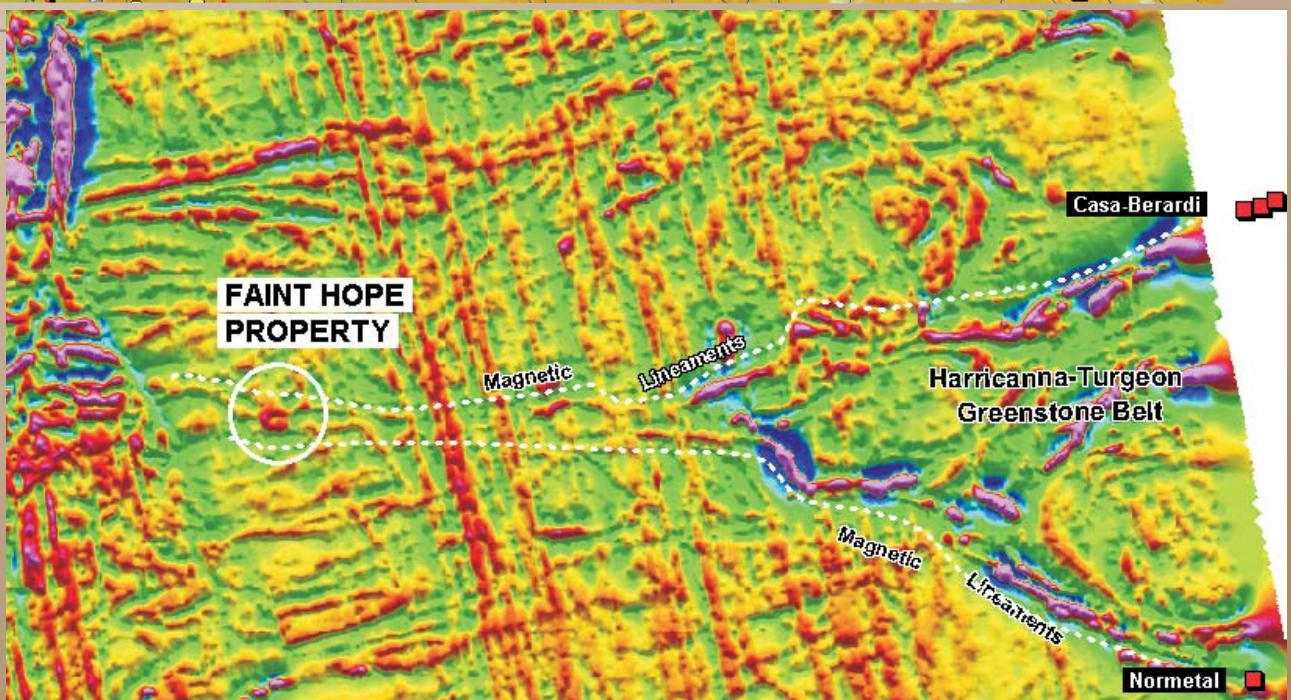
ANOMALIES IN STREAM SEDIMENTS

The youngest interpreted ice advance in the Cochrane area is southward and it is preceded by a southwest advance (230). There is a distinct gold-arsenopyrite-(copper) anomaly down-ice from the Faint Hope target area. Note also the presence of gahnite south or the Eloro Zn showing. Gahnite is a good indicator for metamorphosed zinc deposits and the dispersion plume to the south was well picked up by the stream sediment survey.



MAGNETIC LINEAMENTS

The gold-bearing boulders were intersected while drilling through overburden a few km west of a horseshoe shaped magnetic anomaly that is distinctly apparent and very conspicuous on the regional magnetic map. The anomaly occurs at the intersection of two merging magnetic lineaments which extend into the apex of the Harricana-Turgeon greystone belt located approximately 80 km to the east. This magnetic lineament could be the hinge line of the belt, suggesting that it might extend further west than what is suggested by the current interpretation or a major deformation zone. The Harricana-Turgeon belt hosts several gold and copper-zinc deposits, including those at Casa-Berardi and Normetal.



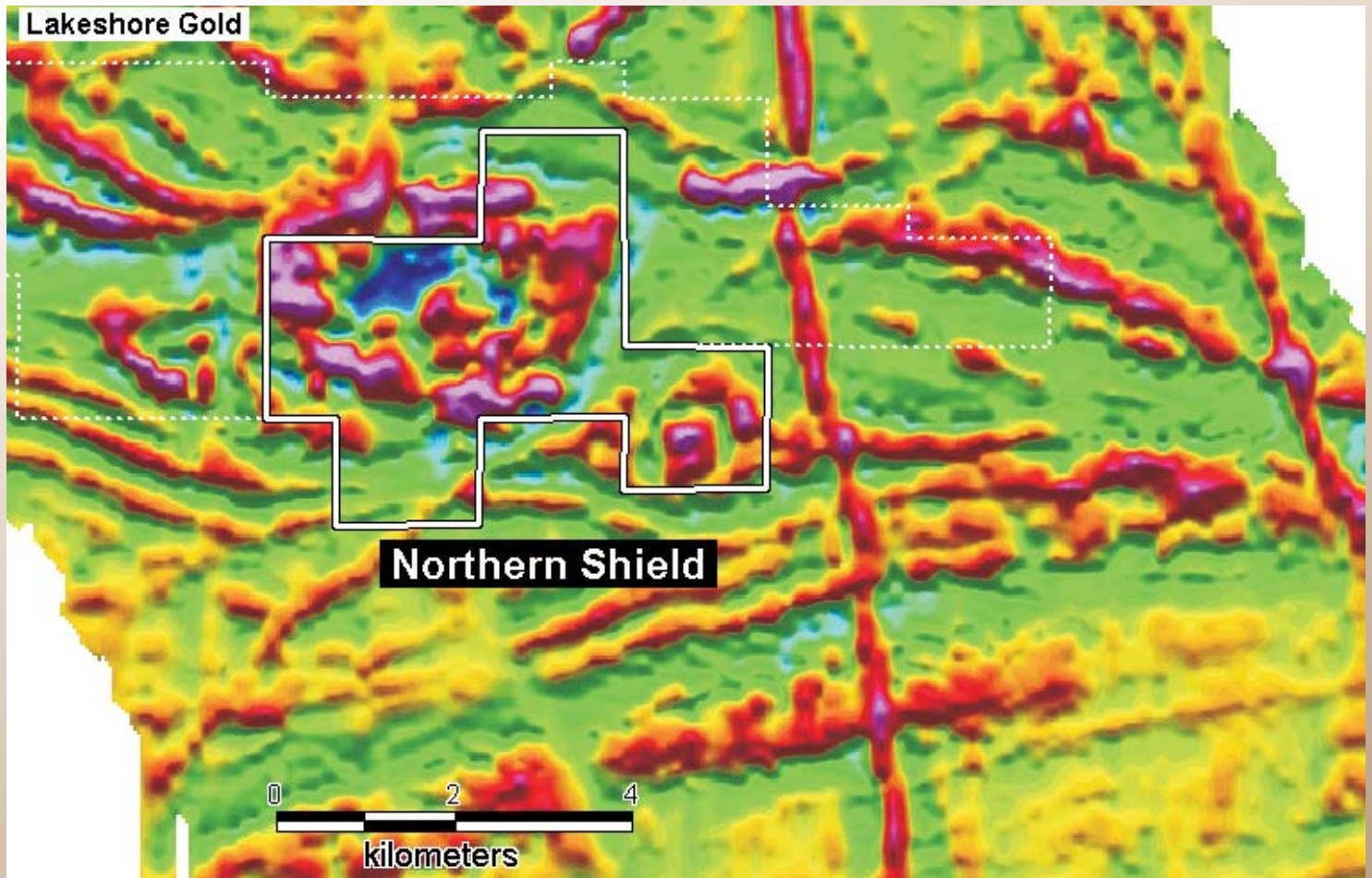


NORTHERN SHIELD RESOURCES INC

TSX VENTURE: NRN

DETAILED MAGNETIC MAP

The large circular anomaly occurs within what is interpreted as a deformation corridor or shear zone.



The three boulder samples analysed returned anomalous gold values (309, 111 and 68 ppb). They are interpreted to represent silicate phase iron formation as they generally consist of calcic amphibole and diopside with siliceous layers and/or quartz bands of very fine grained magnetite. The coarse and blebby nature of some of the pyrite within the fine-grained magnetite-rich and siliceous bands may indicate sulphide replacement and gold potential representing the classic example of Homestake style or Éléonore style gold deposits.



Suite 440, 55 Metcalfe St,
Ottawa, Ontario, K1P 6L5, Canada
Tel: (613) 232-0459. Fax: (613) 232-0760
info@northern-shield.com

Ian Bliss, *CEO*
ibliss@northern-shield.com

Sam Legg, *CFO*
slegg@northern-shield.com

Christine Vaillancourt, *Chief Geologist*
cvaillancourt@northern-shield.com